

# *Studio Maybe*

Price List



SM

# Price List

## Kitchen Studio

### Video

|          |        |
|----------|--------|
| Full Day | \$1500 |
| Half Day | \$900  |

### Stills

|           |       |
|-----------|-------|
| Full Day: | \$900 |
| Half Day: | \$700 |

## Cyclorama + Lifestyle Studio

### Video

|           |        |
|-----------|--------|
| Full Day: | \$1000 |
| Half Day: | \$750  |

### Stills

|           |       |
|-----------|-------|
| Full Day: | \$800 |
| Half Day: | \$600 |

\* Fresh cyclorama paint: \$50

Overtime \$200 per hour

- \* Prices are exclusive of gst
- \* Prices subject to change

# Inclusions

## Kitchen Studios

Exclusive use of two kitchens, additional prep kitchen and communal working table, ducted aircon, coffee and tea facilities. Parking included.

### *Specs / Detail*

- 14m long CaesarStone benchtop
- Moveable island prep benches
- Large and open shooting space
- Natural light or light controlled
- 3.5m ceiling height
- Moveable kitchen set with cooktop island bench
- Drive-up, roller door access for easy unloading

### *Studio Equipment Included*

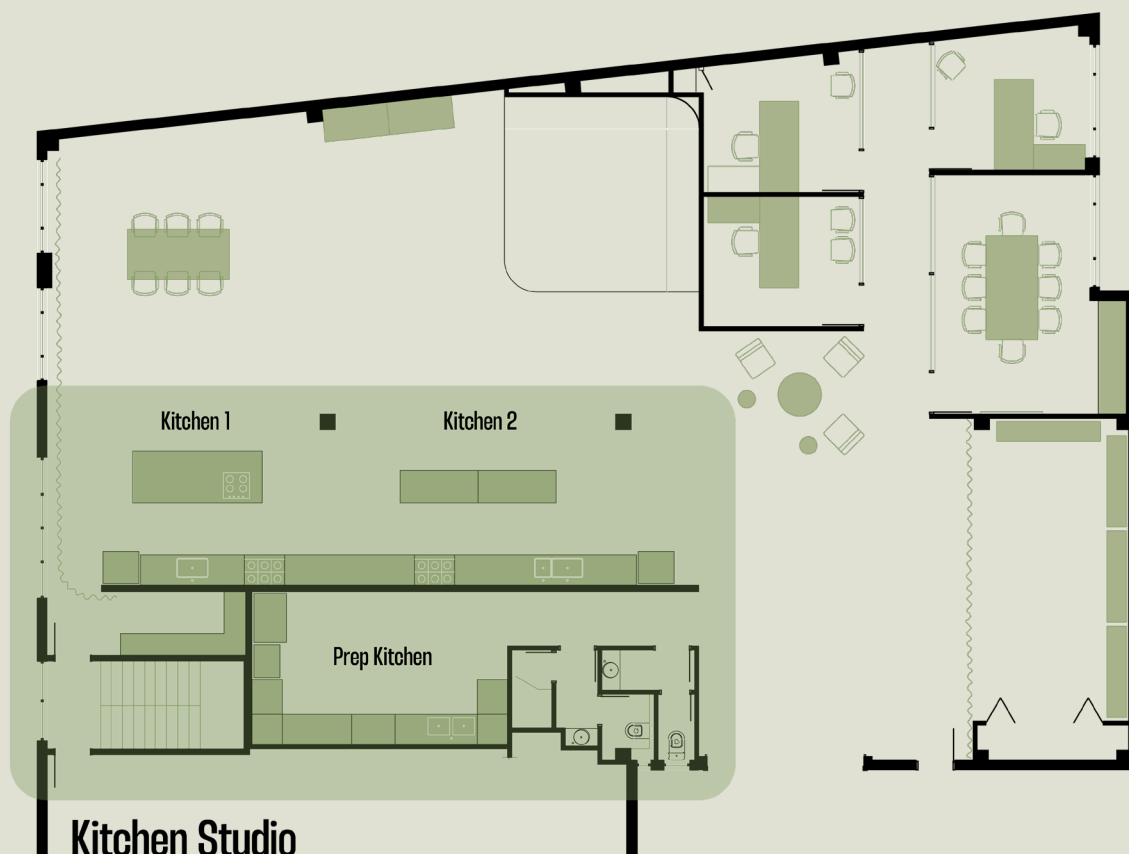
- FOBA ASAB R camera stand
- FOBA COMUN background stand
- 5 x Avenger C stands
- 10 x 10kg shot bags
- 5 x polyboards (black/white)
- 3 x meat axe cutter/flag (various sizes)
- Hair + makeup station

### *Kitchen Equipment Included*

- ILVE + Artusi large appliances
- KitchenAid small appliances
- Suite of kitchen utensils + equipment
- "Off set" prep / wash kitchen

### *Extra Inclusions*

- High speed internet throughout
- Sonos sound system
- 3 phase power: 20amp + 32amp
- 10amp GPO throughout
- Reverse cycle ducted air conditioning
- Designated parking + free street parking
- Client coworking table
- Complimentary coffee + tea
- Shower



# Inclusions

## Cyclorama / Lifestyle Studio

Exclusive use of 4.5 x 4.5m cyclorama, open studio, communal working table, ducted aircon, coffee and tea facilities. Parking included.

### *Specs / Detail*

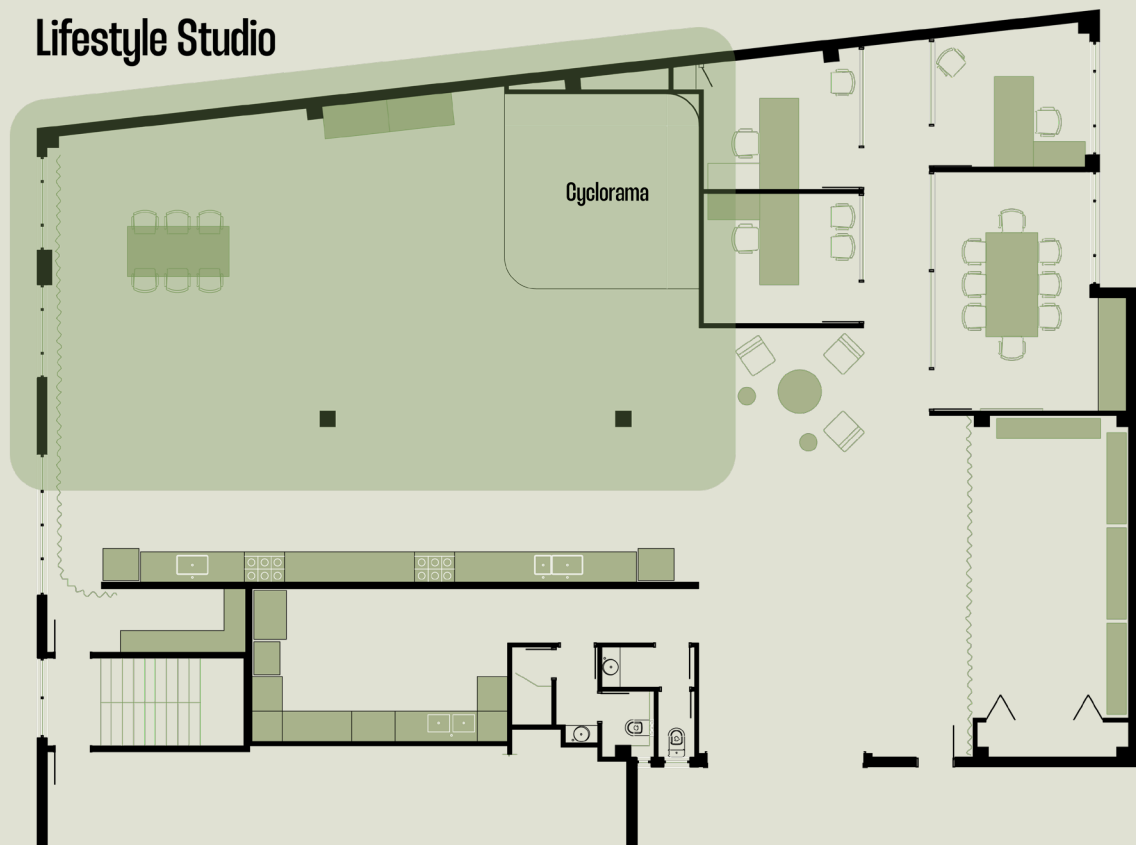
- Large and open shooting space
- Natural light or light controlled
- 3.5m ceiling height
- Drive-up access to studios for easy unloading
- Hair + makeup station
- Clothing racks + iron
- Moveable tables

### *Studio Equipment Included*

- FOBA ASAB R camera stand
- FOBA COMUN background stand
- 5 x Avenger C stands
- 10 x 10kg shot bags
- 5 x polyboards (black/white)
- 3 x meat axe cutter/flag (various sizes)

### *Extra Inclusions*

- High speed internet throughout
- 3 phase power: 20amp + 32amp
- Sonos sound system
- 10amp GPO throughout
- Reverse cycle ducted air conditioning
- Designated parking + free street parking
- Client coworking table
- Complimentary coffee + tea
- Shower



# Additional Information

## Open 7 Days

Full Day: 10 hours  
Half Day: 5 hours  
Overtime Fee: \$200 per hour

## Booking Confirmation

Full payment to be paid 24 hours prior to booking. 48 hour cancellation policy.  
Access pincode provided the day prior to booking.

All bookings are to leave the space as they found it, rubbish taken to the bins, all surfaces and floors wiped and clean. If left in an unsatisfactory condition a \$250 cleaning fee will be charged.

## Contact Us

Please contact us to book your next shoot:

[hello@studiomaybe.com.au](mailto:hello@studiomaybe.com.au)

Studio 0499 837 973  
Erin White 0402 689 961  
Meg Yonson 0423 689 799

8/111 Old Pittwater Road  
Brookvale, 2100  
NSW, Australia

